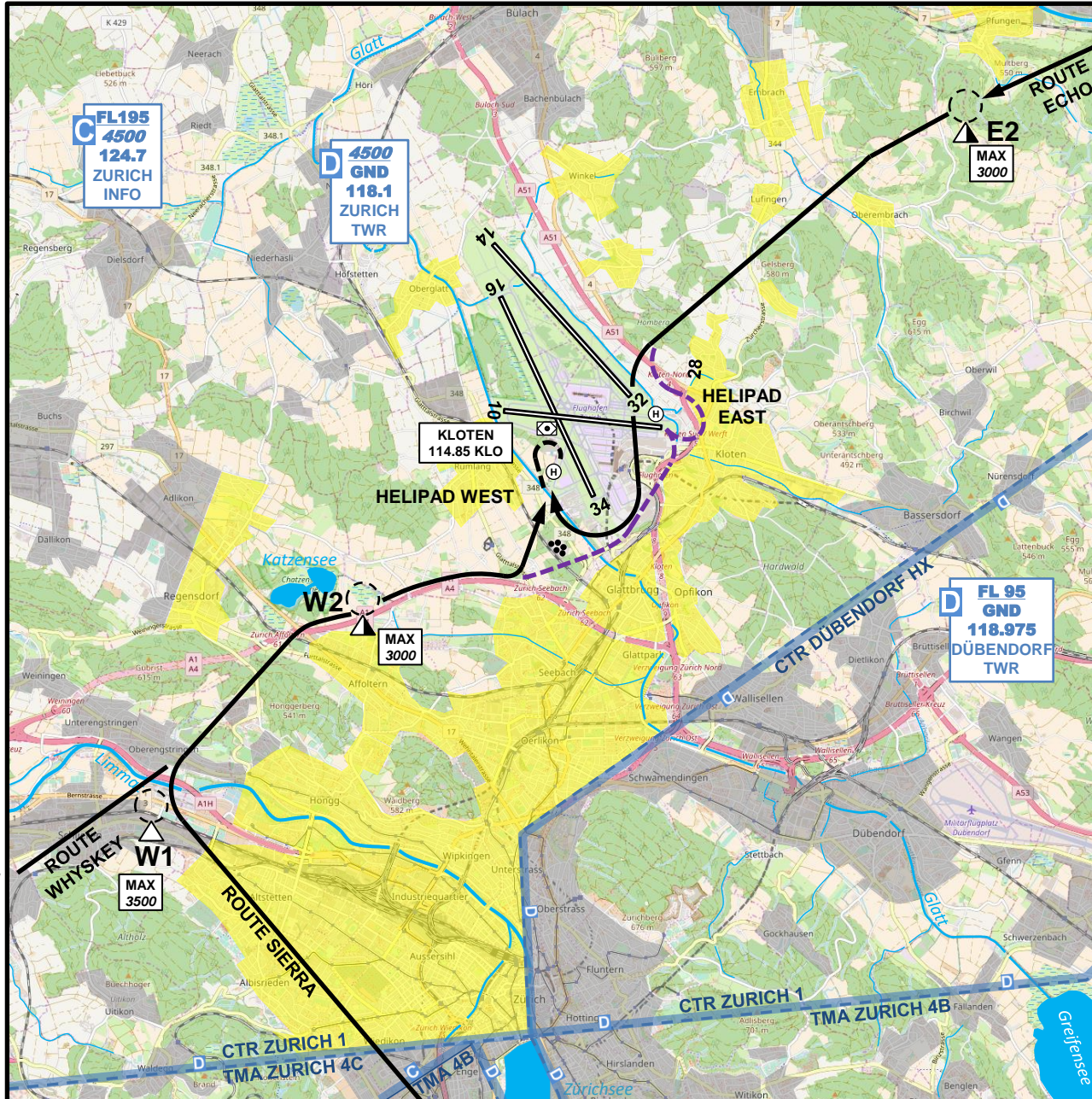


TWR	118.100	APRON S RWY 10/28	121.755
GND	121.905	APRON N RWY 10/28	121.855



- Lärmempfindliche Gebiete
Noise sensitive areas
- Normal-Verfahren
Normal procedures
- Abflug FATO 01
Departure FATO 01
- Anflug/Abflug Helipad EAST
Approach/Departure Helipad EAST

*Höhen über Meer in ft; Höhen über Grund in ft
Altitudes in ft; Heights in ft*

W

S

FLIGHT SIMULATION USE ONLY

