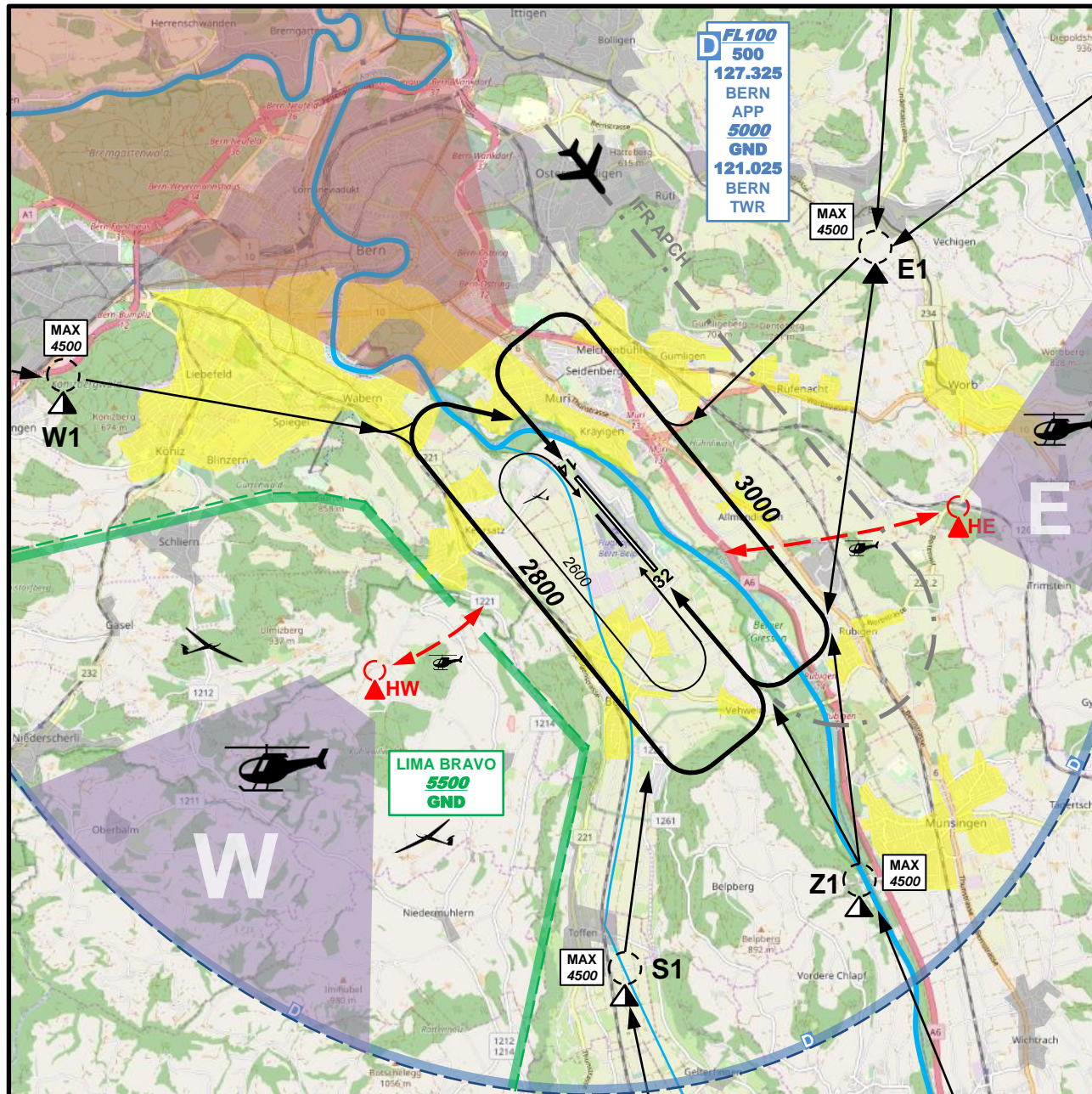


SICHTANFLUGKARTE  
VISUAL APPROACH CHART

ARRIVAL  
ELEV 1673 ft (510 m)

TWR	121.025
APP	127.325

**BERN - BERP  
LSZB**



ATIS BERN abhören  
MNT BERN ATIS

ARR / DEP LSZB: TMA BERN 1 + 2 melden  
avoid TMA BERN 1 + 2

**CTR BERN MAX 4500**

Mit dem ersten Funkkontakt ist der vorgesehene  
Anflugweg zu melden (z.B. Route WHISKEY).

The intended routing (e.g. Route WHISKEY)  
shall be submitted with the first RDO contact

**Anflugrouten / Arrival routes:**  
NOVEMBER: N - E1  
ECHO: E - E1  
ZULU: Z - Z1  
SIERRA: S - S1  
WHISKEY: W - W1

**HEL 4 t MTOM:** See ARR and DEP  
circuits on VAC HEL.  
**HEL > 4 t MTOM:** Use VAC ARR and DEP  
for operations on the paved runway.  
Inform TWR on first call. Exceptions:  
Swiss Helicopter Maintenance.

Nur INBD obligatorisch  
Only INBD compulsory

**HE** 46° 54' 59" N / 007° 33' 57" E  
**HW** 46° 53' 23" N / 007° 27' 41" E

**WIL R220 / D2**  
**FRI R053 / D11.9**

Anflugsektor HELI  
ARR Sector HELI

Zones sensibles au bruit  
Noise sensitive areas

**LIMA BRAVO 5500 GND**  
Einflug Verboten wenn aktiv (ATIS)  
Entering prohibited when ACT (ATIS)

**Transition Level: by ATC**

**CTNs** IFR APCH AREA meiden  
Avoid IFR APCH AREA

**CTN:** IFR circuit ARR BTN: 3000 - 4000

Altitudes in ft; Höhen in ft  
Altitudes in ft; Height in ft

April20- CH FLIGHT OPS DEPARTMENT



FLIGHT SIMULATION USE ONLY

