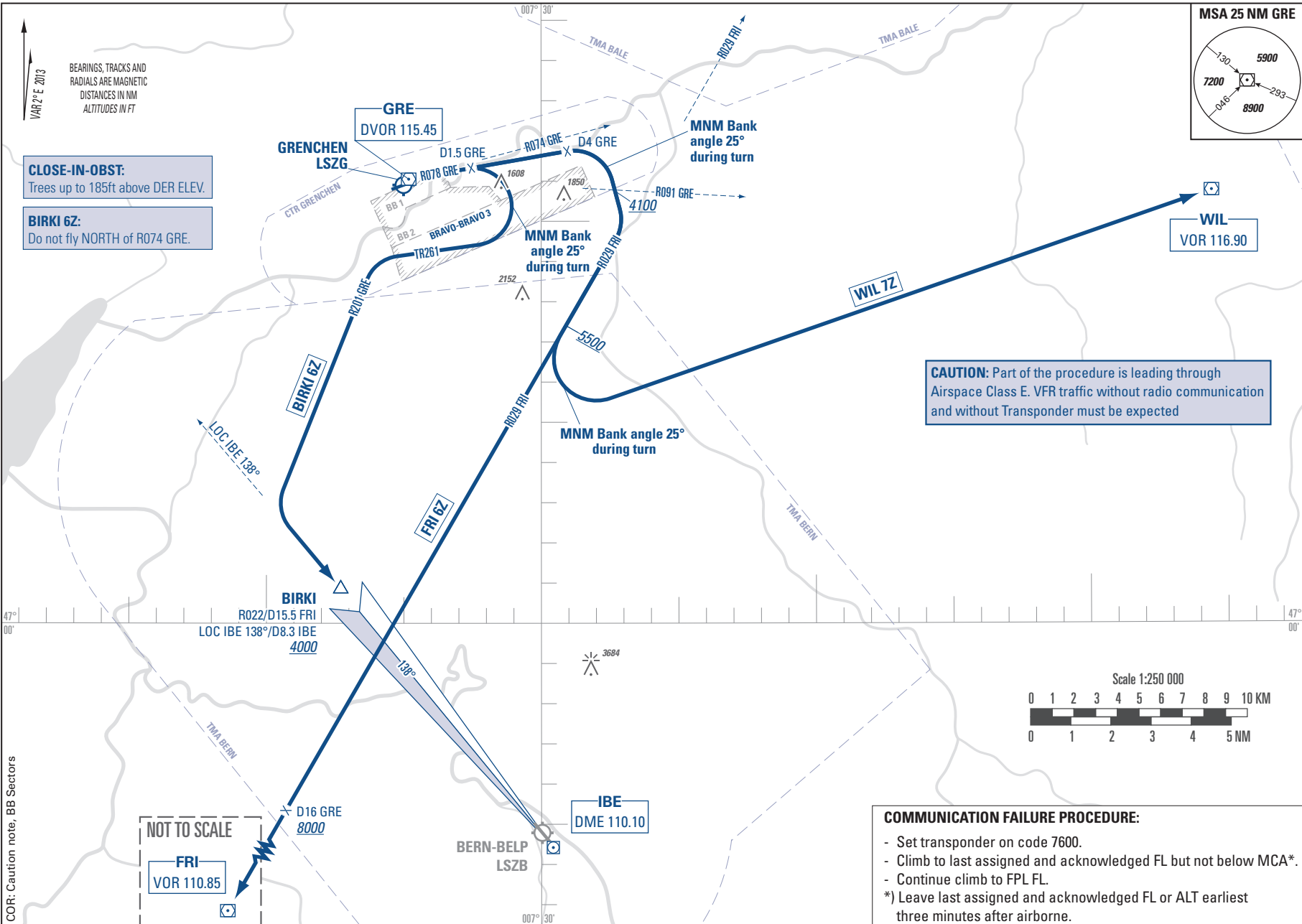
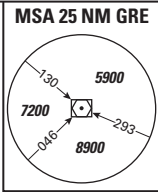


DO NOT USE FOR REAL LIFE NAVIGATION



VAR 2° E 2013
BEARINGS, TRACKS AND RADIALS ARE MAGNETIC DISTANCES IN NM ALTITUDES IN FT

CLOSE-IN-OBST:
Trees up to 185ft above DER ELEV.

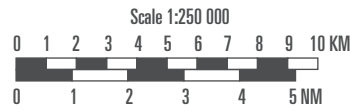
BIRKI 6Z:
Do not fly NORTH of R074 GRE.

CAUTION: Part of the procedure is leading through Airspace Class E. VFR traffic without radio communication and without Transponder must be expected

COMMUNICATION FAILURE PROCEDURE:

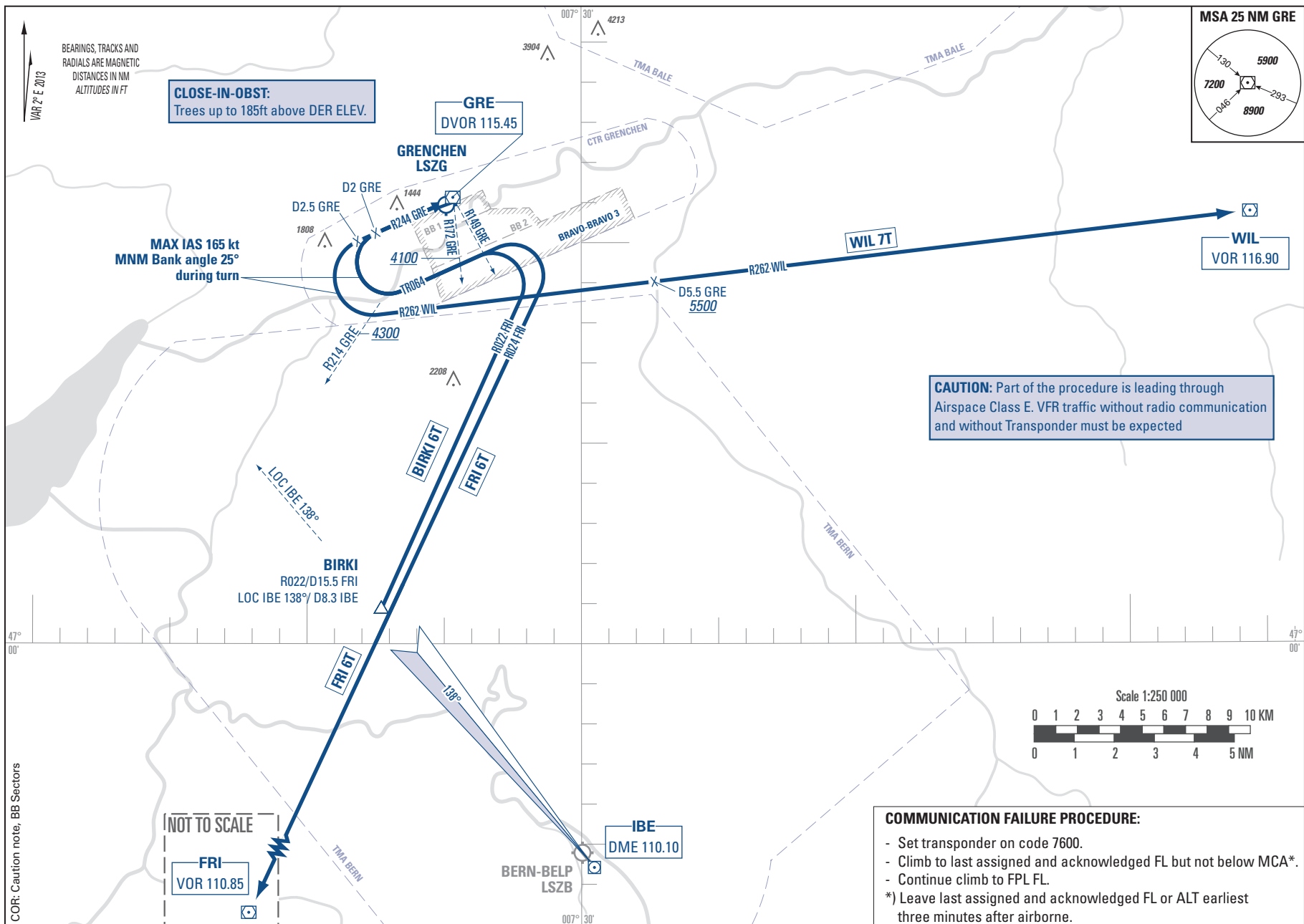
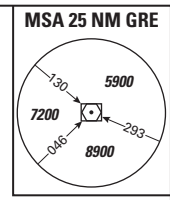
- Set transponder on code 7600.
- Climb to last assigned and acknowledged FL but not below MCA*.
- Continue climb to FPL.

*) Leave last assigned and acknowledged FL or ALT earliest three minutes after airborne.



NOT TO SCALE
FRI
VOR 110.85

DO NOT USE FOR REAL LIFE NAVIGATION



CLOSE-IN-OBST:
Trees up to 185ft above DER ELEV.

MAX IAS 165 kt
MNM Bank angle 25°
during turn

CAUTION: Part of the procedure is leading through
Airspace Class E. VFR traffic without radio communication
and without Transponder must be expected

COMMUNICATION FAILURE PROCEDURE:

- Set transponder on code 7600.
- Climb to last assigned and acknowledged FL but not below MCA*.
- Continue climb to FPL.
- *) Leave last assigned and acknowledged FL or ALT earliest three minutes after airborne.

BEARINGS, TRACKS AND
RADIALS ARE MAGNETIC
DISTANCES IN NM
ALTITUDES IN FT

VAR 2° E 2013

COR: Caution note, BB Sectors

DO NOT USE FOR REAL LIFE NAVIGATION

