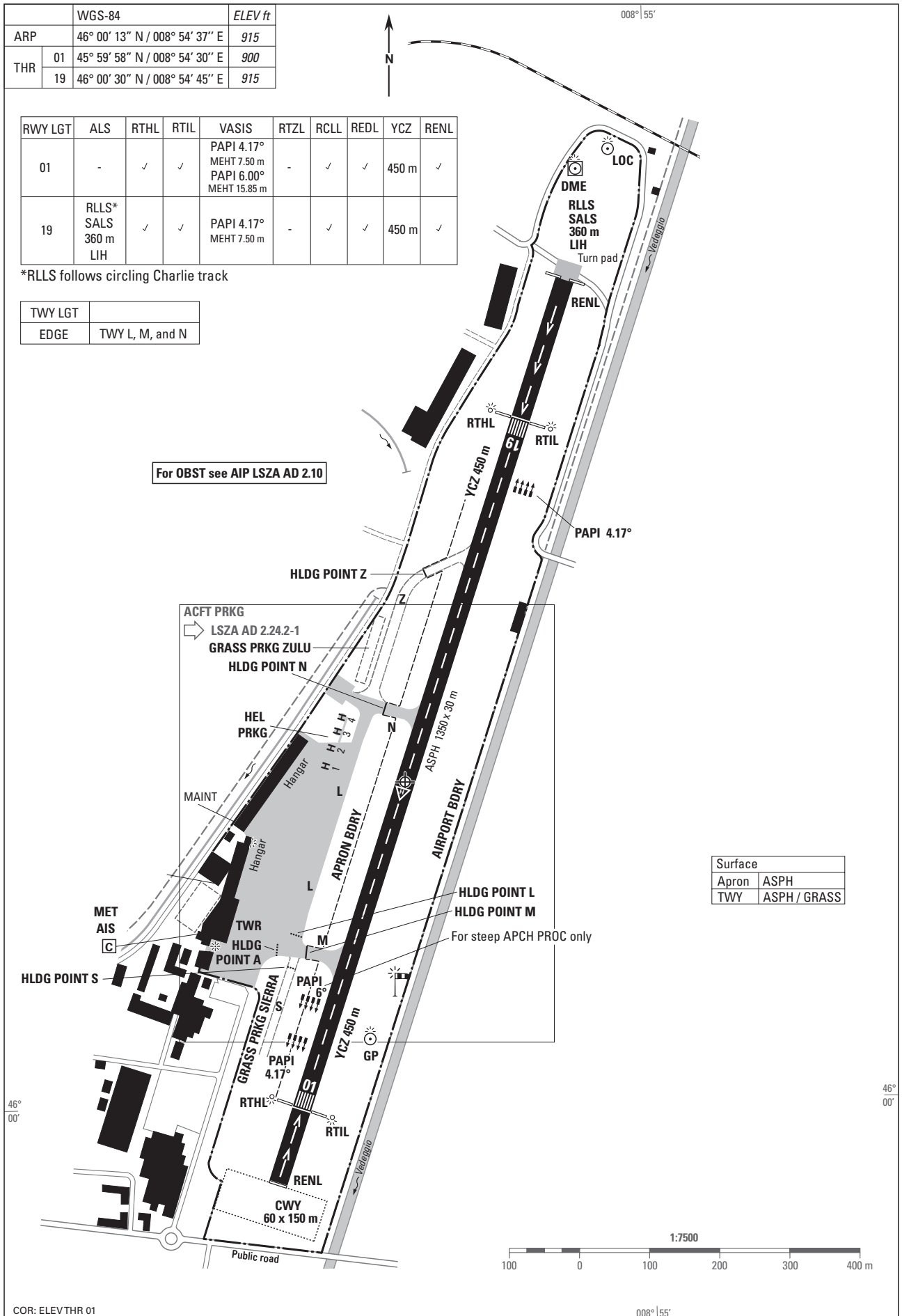


	WGS-84	ELEV ft
ARP	46° 00' 13" N / 008° 54' 37" E	915
THR	01 45° 59' 58" N / 008° 54' 30" E	900
	19 46° 00' 30" N / 008° 54' 45" E	915

RWY LGT	ALS	RTHL	RTIL	VASIS	RTZL	RCLL	REDL	YCZ	RENL
01	-	✓	✓	PAPI 4.17° MEHT 7.50 m PAPI 6.00° MEHT 15.85 m	-	✓	✓	450 m	✓
19	RLLS* SALS 360 m LIH	✓	✓	PAPI 4.17° MEHT 7.50 m	-	✓	✓	450 m	✓

\*RLLS follows circling Charlie track

TWY LGT	
EDGE	TWY L, M, and N

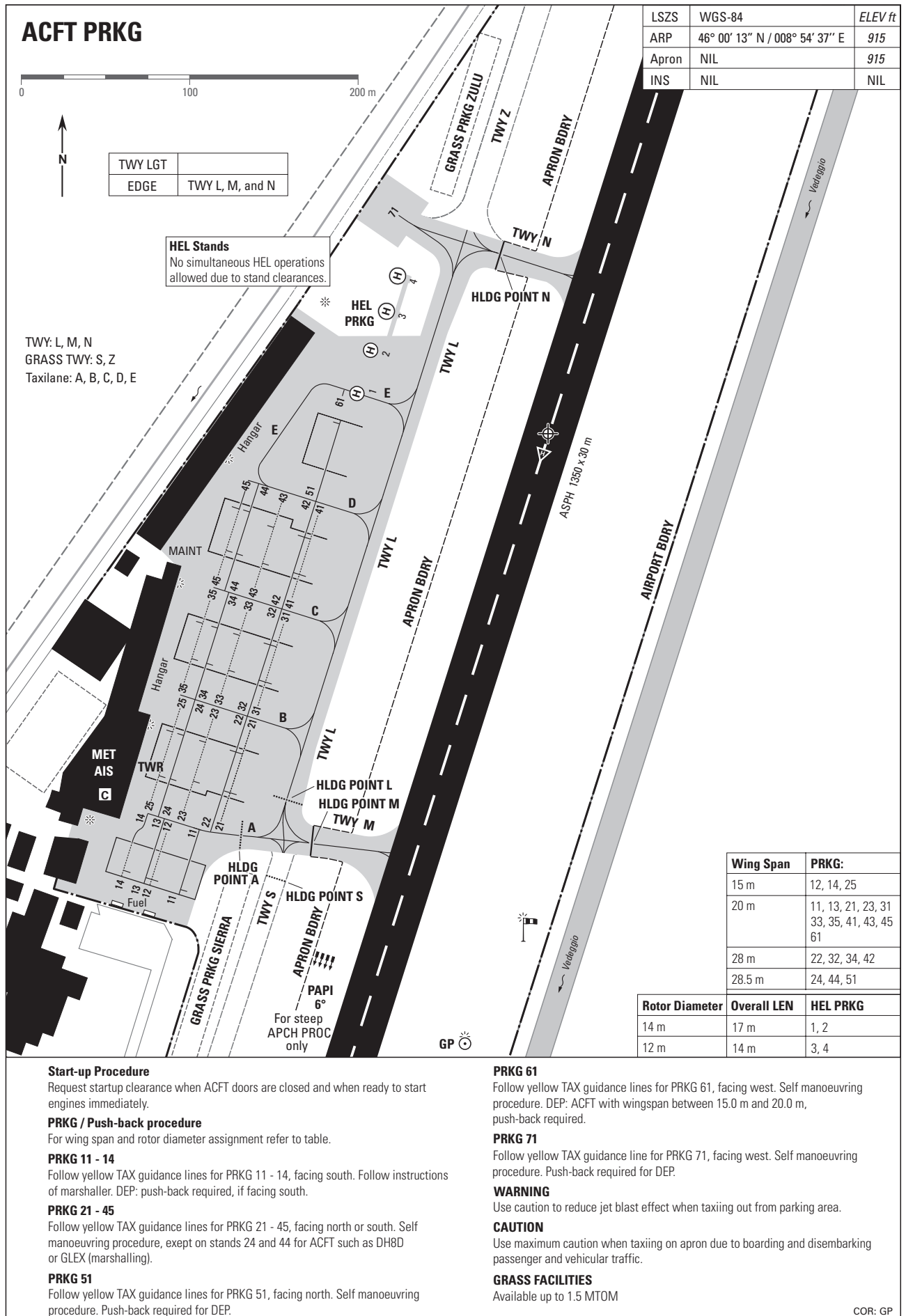


For OBST see AIP LSZA AD 2.10

Surface	
Apron	ASPH
TWY	ASPH / GRASS

COR: ELEVTHR 01

008° 55'



**Start-up Procedure**  
Request startup clearance when ACFT doors are closed and when ready to start engines immediately.

**PRKG / Push-back procedure**  
For wing span and rotor diameter assignment refer to table.

**PRKG 11 - 14**  
Follow yellow TAX guidance lines for PRKG 11 - 14, facing south. Follow instructions of marshaller. DEP: push-back required, if facing south.

**PRKG 21 - 45**  
Follow yellow TAX guidance lines for PRKG 21 - 45, facing north or south. Self manoeuvring procedure, except on stands 24 and 44 for ACFT such as DH8D or GLEX (marshalling).

**PRKG 51**  
Follow yellow TAX guidance lines for PRKG 51, facing north. Self manoeuvring procedure. Push-back required for DEP.

**PRKG 61**  
Follow yellow TAX guidance lines for PRKG 61, facing west. Self manoeuvring procedure. DEP: ACFT with wingspan between 15.0 m and 20.0 m, push-back required.

**PRKG 71**  
Follow yellow TAX guidance line for PRKG 71, facing west. Self manoeuvring procedure. Push-back required for DEP.

**WARNING**  
Use caution to reduce jet blast effect when taxiing out from parking area.

**CAUTION**  
Use maximum caution when taxiing on apron due to boarding and disembarking passenger and vehicular traffic.

**GRASS FACILITIES**  
Available up to 1.5 MTOM

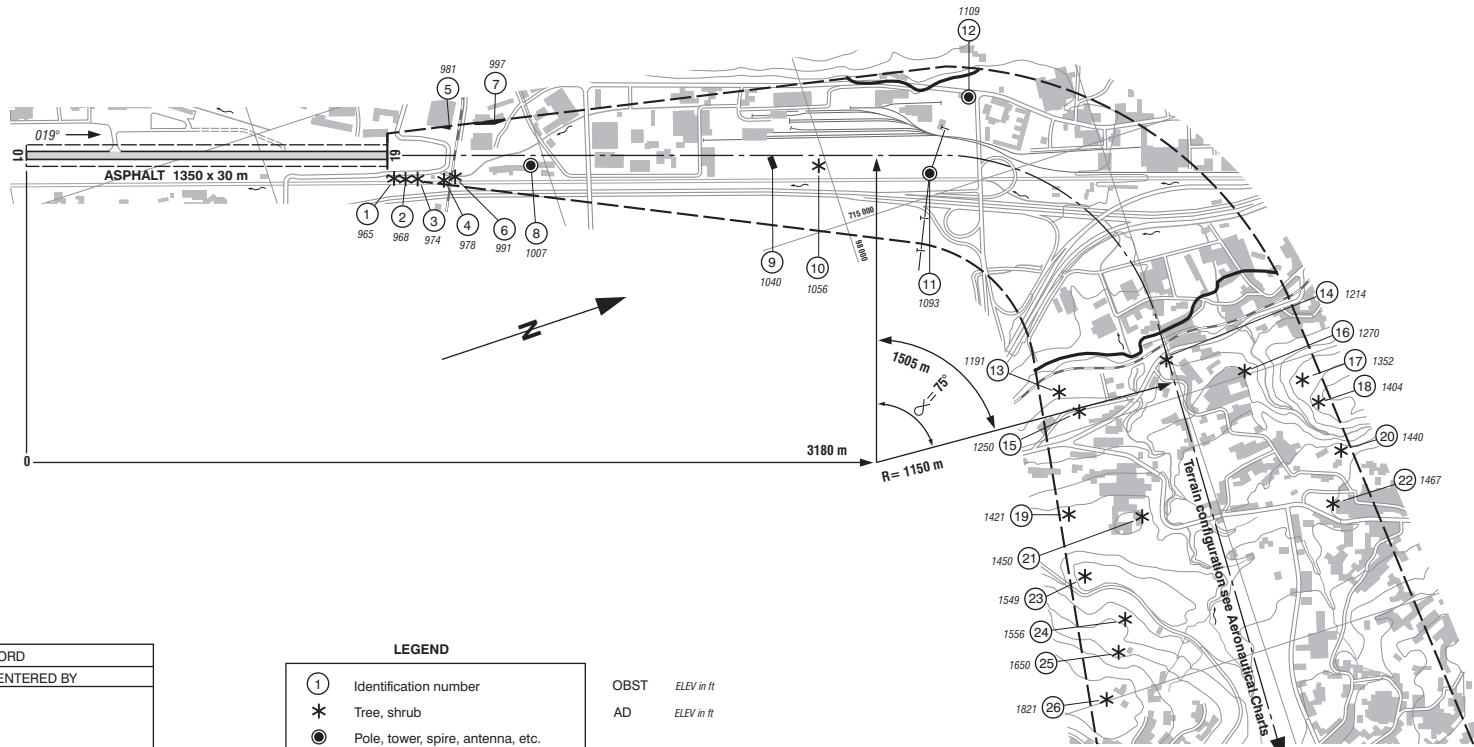
COR: GP

VAR 1° E (2007)

PROFILE see LSZA AD 2.24.4-2

**RWY: 01**

RWY 01	DECLARED DISTANCES	RWY 19
1350	TAKE-OFF RUN AVAILABLE	—
1350	TAKE-OFF DISTANCE AVAILABLE	—
1350	ACCELERATE STOP DISTANCE AVAILABLE	—
—	LANDING DISTANCE AVAILABLE	1145



AMDT RECORD		
No.	DATE	ENTERED BY

**LEGEND**

- ① Identification number
- \* Tree, shrub
- Pole, tower, spire, antenna, etc.
- Building, large structure
- Railroad
- Transmission line, overhead cable
- ⌒ Terrain penetrating obstruction plane

OBST ELEV in ft  
AD ELEV in ft

ORDER OF ACCURACY ACCORDING TO ICAO REQUIREMENTS

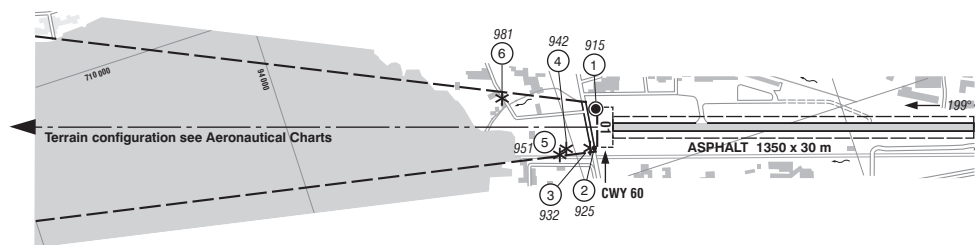
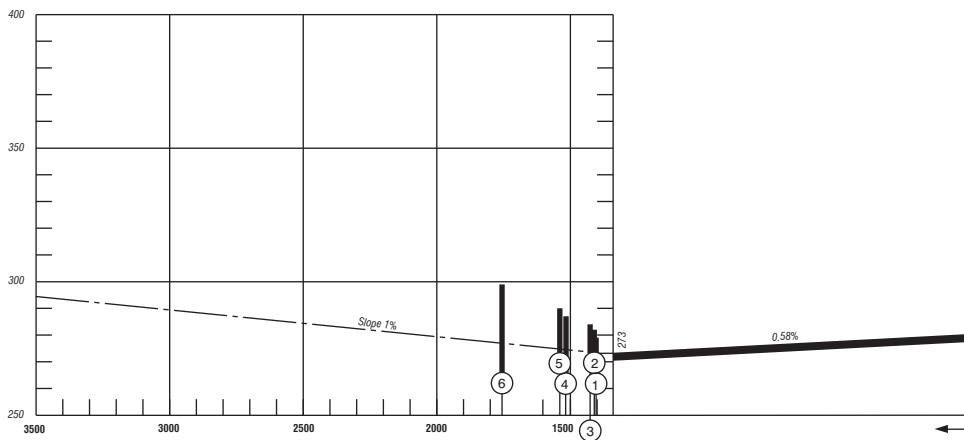
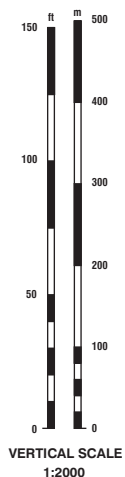
COR: OBST, VAR, additional information

17th Edition

Flotron AG, CH-3860 Melringen

© 2006 Swisstopo, CH-3084 Wabern

VAR 1° E (2007)



**RWY: 19**

RWY 01	DECLARED DISTANCES	RWY 19
—	TAKE-OFF RUN AVAILABLE	1350
—	TAKE-OFF DISTANCE AVAILABLE	1410
—	ACCELERATE STOP DISTANCE AVAILABLE	1350
1240	LANDING DISTANCE AVAILABLE	—

AMDT RECORD		
No.	DATE	ENTERED BY



OBST ELEV in ft  
AD ELEV in ft

ORDER OF ACCURACY ACCORDING TO ICAO REQUIREMENTS

**LEGEND**

- ① Identification number
- \* Tree, shrub
- Pole, tower, spire, antenna, etc.
- Building, large structure
- Railroad
- Transmission line, overhead cable
- ⌒ Terrain penetrating obstruction plane

COR: OBST, VAR, additional information

17th Edition

Flotron AG. CH-3860 Meiringen

© 2006 Swisstopo. CH-3084 Wabern MM